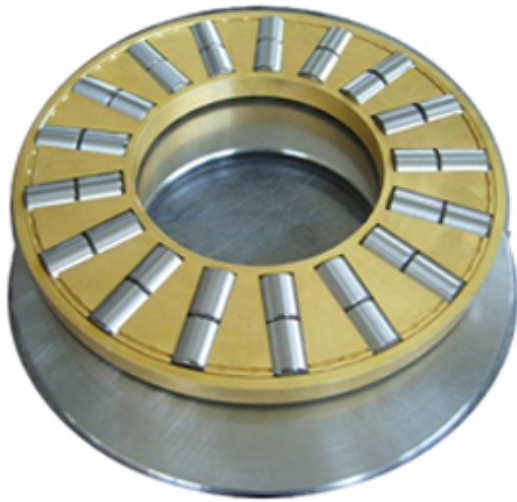




NTK BEARING PRECISION AXLE CORP.



T-608 Bearing 2D drawings and 3D CAD models

CONSOLIDATED BEARING T-608 Thrust Roller Bearing

Bearing No. T-608

Category	Thrust Roller Bearing
Inventory	0.0
Manufacturer Name	CONSOLIDATED BEARING
Minimum Buy Quantity	N/A
Weight	0.45
EAN	0644075099264
Product Group	B04144
Rolling Element	Cylindrical Roller Bearing
Self Aligning	No
Component Description	Roller Assembly plus Raceways
Thrust Bearing	Yes
Single or Double Direction	Single Direction
Banded	No
Cage Material	Machined Bronze
Precision Class	ABEC 1 ISO P0
Other Features	Double Row Housing Side OD 2.796 In
Long Description	1-7/16" Bore 1; 1.516" Bore 2; 2-7/8" Outside Diameter; 13/16" Height; Cylindrical Roller Bearing; Single Direction; Not Self Aligning; Not Banded; Machined Bronze Cage; ABEC 1 I
Inch - Metric	Inch



NTK BEARING PRECISION AXLE CORP.

Category	Thrust Roller Bearings
UNSPSC	31171507
Harmonized Tariff Code	8482.50.00.00
Noun	Bearing
Keyword 3	Cylindrical
Keyword String	Thrust Roller Cylindrical
Manufacturer URL	http://www.consbrgs.com
Manufacturer Item Number	T-608
Weight / LBS	1
D	2.875 Inch 73.025 Millimeter
Bore 2	1.516 Inch 38.506 Millimeter
Height	0.813 Inch 20.65 Millimeter
Overall Height with Aligning Washer	0 Inch 0 Millimeter
Bore 1	1.438 Inch 36.525 Millimeter