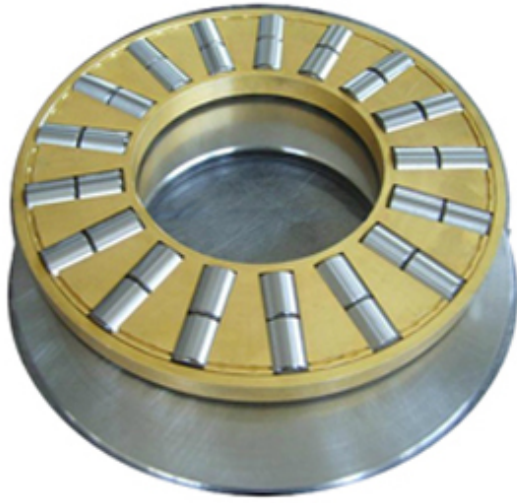




# NTK BEARING PRECISION AXLE CORP.



T-605 Bearing 2D drawings and 3D CAD models

## CONSOLIDATED BEARING T-605 Thrust Roller Bearing

Bearing No. T-605

Category	Thrust Roller Bearing
Inventory	0.0
Manufacturer Name	CONSOLIDATED BEARING
Minimum Buy Quantity	N/A
Weight	0.27
EAN	0644075099233
Product Group	B04144
Rolling Element	Cylindrical Roller Bearing
Self Aligning	No
Component Description	Roller Assembly plus Raceways
Thrust Bearing	Yes
Single or Double Direction	Single Direction
Banded	No
Cage Material	Machined Bronze
Precision Class	ABEC 1   ISO P0
Other Features	Double Row   Housing Side OD 2.323 In
Long Description	1-1/4" Bore 1; 1.28" Bore 2; 2-3/8" Outside Diameter; 13/16" Height; Cylindrical Roller Bearing; Single Direction; Not Self Aligning; Not Banded; Machined Bronze Cage; ABEC 1   ISO
Inch - Metric	Inch



## NTK BEARING PRECISION AXLE CORP.

Category	Thrust Roller Bearings
UNSPSC	31171507
Harmonized Tariff Code	8482.50.00.00
Noun	Bearing
Keyword 3	Cylindrical
Keyword String	Thrust Roller Cylindrical
Manufacturer URL	<a href="http://www.consbrgs.com">http://www.consbrgs.com</a>
Manufacturer Item Number	T-605
Weight / LBS	0.6
D	2.375 Inch   60.325 Millimeter
Height	0.813 Inch   20.65 Millimeter
Overall Height with Aligning Washer	0 Inch   0 Millimeter
Bore 1	1.25 Inch   31.75 Millimeter
Bore 2	1.28 Inch   32.512 Millimeter