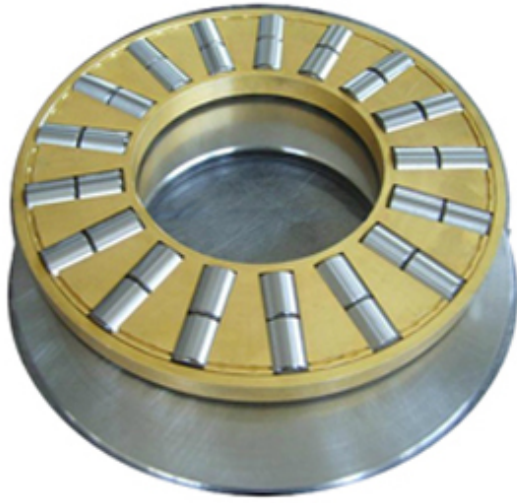




NTK BEARING PRECISION AXLE CORP.



T-606 Bearing 2D drawings and 3D CAD models

CONSOLIDATED BEARING T-606 Thrust Roller Bearing

Bearing No. T-606

Category	Thrust Roller Bearing
Inventory	0.0
Manufacturer Name	CONSOLIDATED BEARING
Minimum Buy Quantity	N/A
Weight	0.27
EAN	0644075099240
Product Group	B04144
Rolling Element	Cylindrical Roller Bearing
Self Aligning	No
Component Description	Roller Assembly plus Raceways
Thrust Bearing	Yes
Single or Double Direction	Single Direction
Banded	No
Cage Material	Machined Bronze
Precision Class	ABEC 1 ISO P0
Other Features	Double Row Housing Side OD 2.323 In
Long Description	1-5/16" Bore 1; 1.339" Bore 2; 2-3/8" Outside Diameter; 13/16" Height; Cylindrical Roller Bearing; Single Direction; Not Self Aligning; Not Banded; Machined Bronze Cage; ABEC 1 I
Inch - Metric	Inch



NTK BEARING PRECISION AXLE CORP.

Category	Thrust Roller Bearings
UNSPSC	31171507
Harmonized Tariff Code	8482.50.00.00
Noun	Bearing
Keyword 3	Cylindrical
Keyword String	Thrust Roller Cylindrical
Manufacturer URL	http://www.consbrgs.com
Manufacturer Item Number	T-606
Weight / LBS	0.6
D	2.375 Inch 60.325 Millimeter
Height	0.813 Inch 20.65 Millimeter
Overall Height with Aligning Washer	0 Inch 0 Millimeter
Bore 2	1.339 Inch 34.011 Millimeter
Bore 1	1.313 Inch 33.35 Millimeter