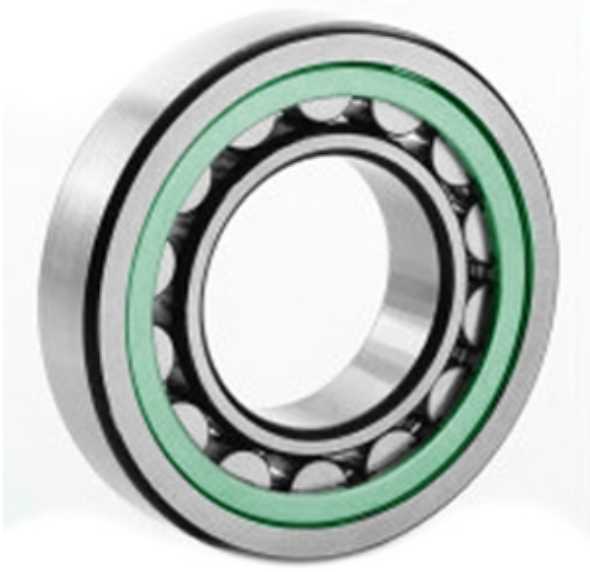




# NTK BEARING PRECISION AXLE CORP.



2.165 Inch | 55 Millimeter x 3.937 Inch | 100 Millimeter x 0.827 Inch | 21 Millimeter  
**CONSOLIDATED BEARING 20211-KT C/3**  
 Spherical Roller Bearings

Bearing No. 20211-KT C/3

20211-KT C/3 Bearing 2D drawings and 3D CAD models

Category	Spherical Roller Bearings
Inventory	0.0
Manufacturer Name	CONSOLIDATED BEARING
Minimum Buy Quantity	N/A
Weight	0.725
EAN	0644075156103
Product Group	B04311
Internal Clearance	C3-Loose
Mounting Method	Adapter Mount
Rolling Element	Spherical Roller Bearing
Bore Profile	Tapered
Cage Material	Polymer
Enclosure	Open
Number of Rows of Rollers	Single Row
Relubricatable	No
Adapter Part Number - Millimeter	H211 (Specify bore)
Inch - Metric	Metric
Long Description	55MM Tapered Bore; 100MM Outside Diameter; 21MM Width; C3-Loose Clearance; Adapter Mount; Single Row of Spherical Roller Bearings; Polymer Cage Material; Open Enclosure; Not



## NTK BEARING PRECISION AXLE CORP.

	Relubricatable; Adapter Pa
Other Features	Order adapter or withdrawal sleeve or nut separately. Others may be available
Category	Spherical Roller Bearing
UNSPSC	31171510
Harmonized Tariff Code	84823040
Noun	Bearing
Keyword String	Spherical
Manufacturer URL	<a href="http://www.consbrgs.com/">http://www.consbrgs.com/</a>
Weight / LBS	1.598
D	3.937 Inch   100 Millimeter
d	2.165 Inch   55 Millimeter
B	0.827 Inch   21 Millimeter