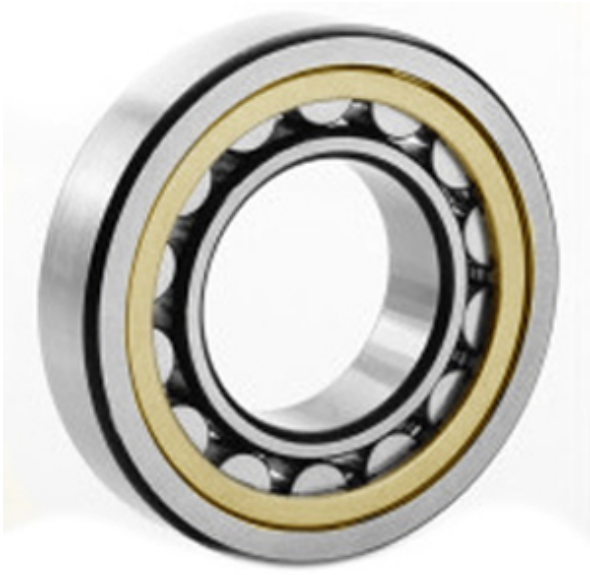




NTK BEARING PRECISION AXLE CORP.



20230 M Bearing 2D drawings and 3D CAD models

5.906 Inch | 150 Millimeter x 10.63 Inch | 270 Millimeter x 1.772 Inch | 45 Millimeter
CONSOLIDATED BEARING 20230 M Spherical Roller Bearings

Bearing No. 20230 M

Category	Spherical Roller Bearings
Inventory	0.0
Manufacturer Name	CONSOLIDATED BEARING
Minimum Buy Quantity	N/A
Weight	11.61
EAN	0644075155861
Product Group	B04311
Internal Clearance	C0-Medium
Mounting Method	Shaft Mount
Rolling Element	Spherical Roller Bearing
Bore Profile	Straight
Cage Material	Bronze
Enclosure	Open
Number of Rows of Rollers	Single Row
Relubricatable	No
Withdrawal Sleeve	Not Applicable
Withdrawal Nut	Not Applicable
Inch - Metric	Metric
Long Description	150MM Straight Bore; 270MM Outside Diameter; 45MM Width; C0-Medium Clearance; Shaft Mount; Single Row of Spherical Roller Bearings; Bronze Cage Material; Open



NTK BEARING PRECISION AXLE CORP.

	Enclosure; Not Relubricatable
Category	Spherical Roller Bearing
UNSPSC	31171510
Harmonized Tariff Code	84823040
Noun	Bearing
Keyword String	Spherical
Manufacturer URL	http://www.consbrgs.com/
Weight / LBS	25.573
Adapter Part Number	Not Applicable Inch Not Applicable Millimeter
B	1.772 Inch 45 Millimeter
D	10.63 Inch 270 Millimeter
d	5.906 Inch 150 Millimeter