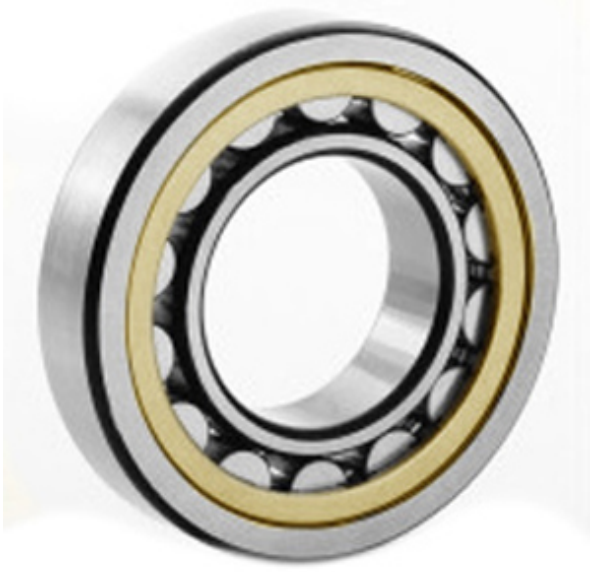




NTK BEARING PRECISION AXLE CORP.



3.937 Inch | 100 Millimeter x 7.087 Inch | 180
 Millimeter x 1.339 Inch | 34 Millimeter
CONSOLIDATED BEARING 20220 M C/3
 Spherical Roller Bearings

Bearing No. 20220 M C/3

20220 M C/3 Bearing 2D drawings and 3D CAD models

Category	Spherical Roller Bearings
Inventory	0.0
Manufacturer Name	CONSOLIDATED BEARING
Minimum Buy Quantity	N/A
Weight	3.92
EAN	0644075155809
Product Group	B04311
Internal Clearance	C3-Loose
Mounting Method	Shaft Mount
Rolling Element	Spherical Roller Bearing
Bore Profile	Straight
Cage Material	Bronze
Enclosure	Open
Number of Rows of Rollers	Single Row
Relubricatable	No
Withdrawal Sleeve	Not Applicable
Withdrawal Nut	Not Applicable
Inch - Metric	Metric
Long Description	100MM Straight Bore; 180MM Outside Diameter; 34MM Width; C3-Loose Clearance; Shaft Mount; Single Row of Spherical Roller Bearings; Bronze Cage Material; Open



NTK BEARING PRECISION AXLE CORP.

	Enclosure; Not Relubricatable
Category	Spherical Roller Bearing
UNSPSC	31171510
Harmonized Tariff Code	84823040
Noun	Bearing
Keyword String	Spherical
Manufacturer URL	http://www.consbrgs.com/
Weight / LBS	8.642
D	7.087 Inch 180 Millimeter
Adapter Part Number	Not Applicable Inch Not Applicable Millimeter
B	1.339 Inch 34 Millimeter
d	3.937 Inch 100 Millimeter