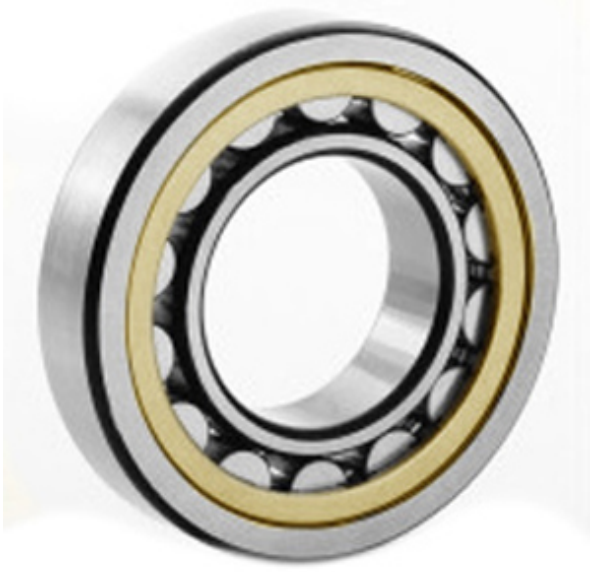




# NTK BEARING PRECISION AXLE CORP.



20218 M Bearing 2D drawings and 3D CAD models

3.543 Inch | 90 Millimeter x 6.299 Inch | 160  
 Millimeter x 1.181 Inch | 30 Millimeter  
**CONSOLIDATED BEARING 20218 M Spherical  
 Roller Bearings**

Bearing No. 20218 M

Category	Spherical Roller Bearings
Inventory	0.0
Manufacturer Name	CONSOLIDATED BEARING
Minimum Buy Quantity	N/A
Weight	2.68
EAN	0644075155762
Product Group	B04311
Internal Clearance	C0-Medium
Mounting Method	Shaft Mount
Rolling Element	Spherical Roller Bearing
Bore Profile	Straight
Cage Material	Bronze
Enclosure	Open
Number of Rows of Rollers	Single Row
Relubricatable	No
Withdrawal Sleeve	Not Applicable
Withdrawal Nut	Not Applicable
Inch - Metric	Metric
Long Description	90MM Straight Bore; 160MM Outside Diameter; 30MM Width; C0-Medium Clearance; Shaft Mount; Single Row of Spherical Roller Bearings; Bronze Cage Material; Open



## NTK BEARING PRECISION AXLE CORP.

	Enclosure; Not Relubricatable
Category	Spherical Roller Bearing
UNSPSC	31171510
Harmonized Tariff Code	84823040
Noun	Bearing
Keyword String	Spherical
Manufacturer URL	<a href="http://www.consbrgs.com/">http://www.consbrgs.com/</a>
Weight / LBS	5.908
d	3.543 Inch   90 Millimeter
B	1.181 Inch   30 Millimeter
Adapter Part Number	Not Applicable Inch   Not Applicable Millimeter
D	6.299 Inch   160 Millimeter