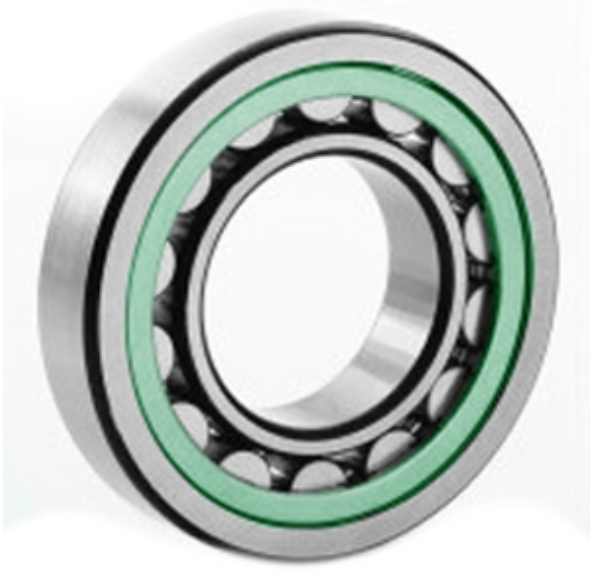




NTK BEARING PRECISION AXLE CORP.



20216-KT Bearing 2D drawings and 3D CAD models

3.15 Inch | 80 Millimeter x 5.512 Inch | 140 Millimeter x 1.024 Inch | 26 Millimeter
CONSOLIDATED BEARING 20216-KT
Spherical Roller Bearings

Bearing No. 20216-KT

Category	Spherical Roller Bearings
Inventory	0.0
Manufacturer Name	CONSOLIDATED BEARING
Minimum Buy Quantity	N/A
Weight	1.735
EAN	0644075156264
Product Group	B04311
Internal Clearance	C0-Medium
Mounting Method	Adapter Mount
Rolling Element	Spherical Roller Bearing
Bore Profile	Tapered
Cage Material	Polymer
Enclosure	Open
Number of Rows of Rollers	Single Row
Relubricatable	No
Adapter Part Number - Millimeter	H216 (Specify bore)
Inch - Metric	Metric
Long Description	80MM Tapered Bore; 140MM Outside Diameter; 26MM Width; C0-Medium Clearance; Adapter Mount; Single Row of Spherical Roller Bearings; Polymer Cage Material; Open Enclosure; Not



NTK BEARING PRECISION AXLE CORP.

	Relubricatable; Adapter P
Other Features	Order adapter or withdrawal sleeve or nut separately. Others may be available
Category	Spherical Roller Bearing
UNSPSC	31171510
Harmonized Tariff Code	84823040
Noun	Bearing
Keyword String	Spherical
Manufacturer URL	http://www.consbrgs.com/
Weight / LBS	3.825
d	3.15 Inch 80 Millimeter
B	1.024 Inch 26 Millimeter
D	5.512 Inch 140 Millimeter