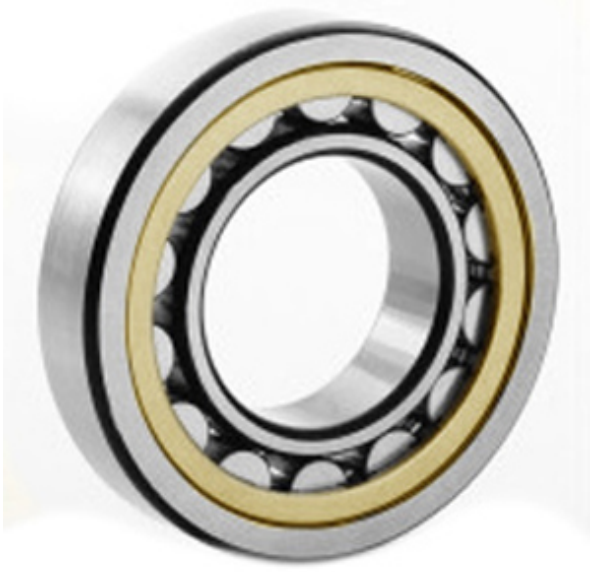




NTK BEARING PRECISION AXLE CORP.



20216 M Bearing 2D drawings and 3D CAD models

3.15 Inch | 80 Millimeter x 5.512 Inch | 140 Millimeter x 1.024 Inch | 26 Millimeter
CONSOLIDATED BEARING 20216 M Spherical Roller Bearings

Bearing No. 20216 M

Category	Spherical Roller Bearings
Inventory	0.0
Manufacturer Name	CONSOLIDATED BEARING
Minimum Buy Quantity	N/A
Weight	1.735
EAN	0644075155724
Product Group	B04311
Internal Clearance	C0-Medium
Mounting Method	Shaft Mount
Rolling Element	Spherical Roller Bearing
Bore Profile	Straight
Cage Material	Bronze
Enclosure	Open
Number of Rows of Rollers	Single Row
Relubricatable	No
Withdrawal Sleeve	Not Applicable
Withdrawal Nut	Not Applicable
Inch - Metric	Metric
Long Description	80MM Straight Bore; 140MM Outside Diameter; 26MM Width; C0-Medium Clearance; Shaft Mount; Single Row of Spherical Roller Bearings; Bronze Cage Material; Open



NTK BEARING PRECISION AXLE CORP.

	Enclosure; Not Relubricatable
Category	Spherical Roller Bearing
UNSPSC	31171510
Harmonized Tariff Code	84823040
Noun	Bearing
Keyword String	Spherical
Manufacturer URL	http://www.consbrgs.com/
Weight / LBS	3.825
d	3.15 Inch 80 Millimeter
B	1.024 Inch 26 Millimeter
Adapter Part Number	Not Applicable Inch Not Applicable Millimeter
D	5.512 Inch 140 Millimeter