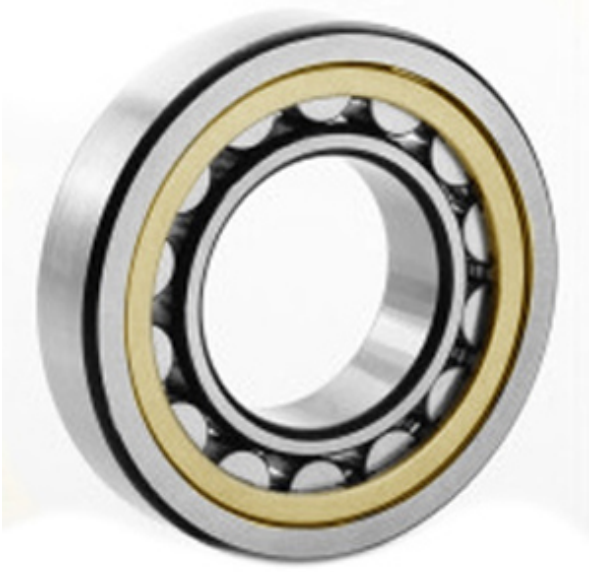




# NTK BEARING PRECISION AXLE CORP.



20215-KM Bearing 2D drawings and 3D CAD models

2.953 Inch | 75 Millimeter x 5.118 Inch | 130  
Millimeter x 0.984 Inch | 25 Millimeter  
**CONSOLIDATED BEARING 20215-KM**  
Spherical Roller Bearings

Bearing No. 20215-KM

Category	Spherical Roller Bearings
Inventory	0.0
Manufacturer Name	CONSOLIDATED BEARING
Minimum Buy Quantity	N/A
Weight	1.4
EAN	0644075156226
Product Group	B04311
Internal Clearance	C0-Medium
Mounting Method	Adapter Mount
Rolling Element	Spherical Roller Bearing
Bore Profile	Tapered
Cage Material	Bronze
Enclosure	Open
Number of Rows of Rollers	Single Row
Relubricatable	No
Adapter Part Number - Millimeter	H215 (Specify bore)
Inch - Metric	Metric
Long Description	75MM Tapered Bore; 130MM Outside Diameter; 25MM Width; C0-Medium Clearance; Adapter Mount; Single Row of Spherical Roller Bearings; Bronze Cage Material; Open Enclosure; Not



## NTK BEARING PRECISION AXLE CORP.

	Relubricatable; Adapter Pa
Other Features	Order adapter or withdrawal sleeve or nut separately. Others may be available
Category	Spherical Roller Bearing
UNSPSC	31171510
Harmonized Tariff Code	84823040
Noun	Bearing
Keyword String	Spherical
Manufacturer URL	<a href="http://www.consbrgs.com/">http://www.consbrgs.com/</a>
Weight / LBS	3.086
D	5.118 Inch   130 Millimeter
B	0.984 Inch   25 Millimeter
d	2.953 Inch   75 Millimeter