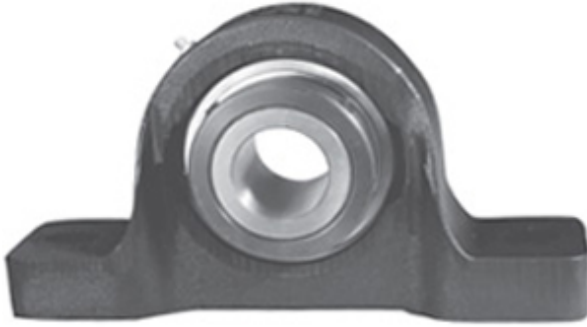




NTK BEARING PRECISION AXLE CORP.

3.5 Inch | 88.9 Millimeter x 4.938 Inch | 125.425 Millimeter x 5.125 Inch | 130.175 Millimeter LINK BELT PU356 Pillow Block Bearings



Bearing No. PU356

PU356 Bearing 2D drawings and 3D CAD models

Category	Pillow Block Bearings
Inventory	0.0
Manufacturer Name	REXNORD
Minimum Buy Quantity	N/A
Weight	31.78
EAN	0662327883348
Product Group	M06110
Number of Mounting Holes	2
Mounting Method	Concentric Collar
Housing Style	2 Bolt Pillow Block
Rolling Element	Ball Bearing
Housing Material	Cast Iron
Expansion / Non-expansion	Non-expansion
Mounting Bolts	1 Inch
Relubricatable	Yes
Insert Part Number	UG356L
Seals	Steel Clad Clearance
Housing Configuration	1 Piece Solid
Inch - Metric	Inch
Other Features	Single Row Heavy Duty Single Collar Standard Backing With Set Screw
Long Description	2 Bolt Pillow Block; 3-1/2" Bore; 5-1/8" Base to Center Height; Concentric Collar Mount; Ball Bearing;



NTK BEARING PRECISION AXLE CORP.

	Relubricatable; Cast Iron; Steel Clad Clearance; Non- expansion
Category	Pillow Block
UNSPSC	31171511
Harmonized Tariff Code	8483.20.40.40
Noun	Bearing
Keyword String	Pillow Block
Manufacturer URL	http://www.rexnord.com
Manufacturer Item Number	PU356
Manufacturer Internal Number	5888334
Weight / LBS	70
Actual Bolt Center to Center	12.9 Inch 327.7Millimeter
Nominal Bolt Center to Center	12.9 Inch 327 Millimeter
D	4.938 Inch 125.425 Millimeter
d	3.5 Inch 88.9 Millimeter
Bolt Spacing Minimum	0 Inch 0Millimeter
Bolt Spacing Maximum	0 Inch 0Millimeter
B	5.125 Inch 130.175 Millimeter