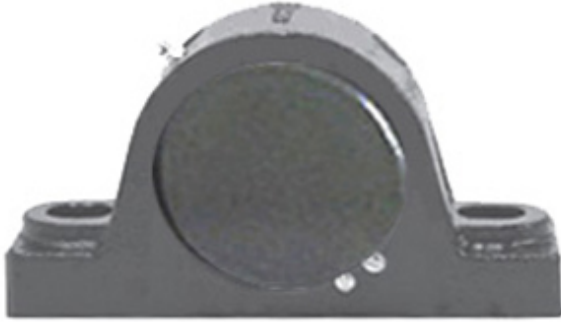




# NTK BEARING PRECISION AXLE CORP.

2.438 Inch | 61.925 Millimeter x 3.5 Inch | 88.9 Millimeter x 2.75 Inch | 69.85 Millimeter LINK BELT PB22439EECTD Pillow Block Bearings



PB22439EECTD Bearing 2D drawings and 3D CAD models

Bearing No. PB22439EECTD

Category	Pillow Block Bearings
Inventory	0.0
Manufacturer Name	REXNORD
Minimum Buy Quantity	N/A
Weight	7.72
EAN	0793699184488
Product Group	M06288
Number of Mounting Holes	2
Mounting Method	Concentric Collar
Housing Style	2 Bolt Pillow Block
Rolling Element	Spherical Roller Bearing
Housing Material	Cast Iron
Expansion / Non-expansion	Non-expansion
Mounting Bolts	5/8 Inch
Relubricatable	Yes
Insert Part Number	B22439EL
Seals	Spring Loaded Lip
Housing Configuration	1 Piece Solid
Inch - Metric	Inch
Other Features	Double Row   Single Collar   Closed End   Extended Inner Race   With Set Screw
Long Description	2 Bolt Pillow Block; 2-7/16" Bore; 2-3/4" Base to Center Height; Concentric Collar Mount; Spherical Roller



## NTK BEARING PRECISION AXLE CORP.

	Bearing; Relubricatable; Cast Iron; Spring Loaded Lip; Non-expansion
Category	Pillow Block
UNSPSC	31171511
Harmonized Tariff Code	8483.20.40.80
Noun	Bearing
Keyword String	Pillow Block
Manufacturer URL	<a href="http://www.rexnord.com">http://www.rexnord.com</a>
Manufacturer Item Number	PB22439EECTD
Manufacturer Internal Number	5818448
Weight / LBS	17
Bolt Spacing Maximum	0 Inch   0Millimeter
Nominal Bolt Center to Center	7.1 Inch   181 Millimeter
Bolt Spacing Minimum	0 Inch   0Millimeter
B	2.75 Inch   69.85 Millimeter
Actual Bolt Center to Center	7.1 Inch   181Millimeter
D	3.5 Inch   88.9 Millimeter
d	2.438 Inch   61.925 Millimeter