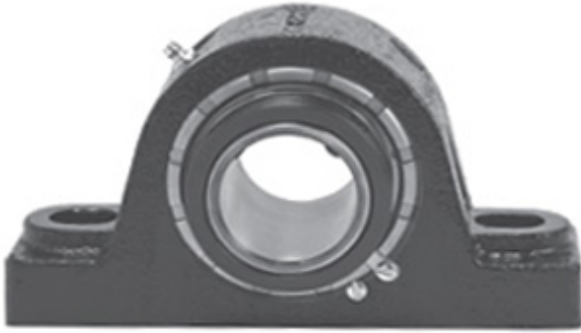




NTK BEARING PRECISION AXLE CORP.

1.625 Inch | 41.275 Millimeter x 3.125 Inch |
79.38 Millimeter x 2.125 Inch | 53.98 Millimeter
LINK BELT PKB22426H Pillow Block Bearings



Bearing No. PKB22426H

PKB22426H Bearing 2D drawings and 3D CAD models

Category	Pillow Block Bearings
Inventory	0.0
Manufacturer Name	REXNORD
Minimum Buy Quantity	N/A
Weight	4.858
EAN	0662327114299
Product Group	M06288
Number of Mounting Holes	2
Mounting Method	Concentric Collar
Housing Style	2 Bolt Pillow Block
Rolling Element	Spherical Roller Bearing
Housing Material	Cast Steel
Expansion / Non-expansion	Non-expansion
Mounting Bolts	1/2 Inch
Relubricatable	Yes
Insert Part Number	B22426HL
Seals	Floating Labyrinth
Housing Configuration	1 Piece Solid
Inch - Metric	Inch
Other Features	Double Row Single Collar Extended Inner Race With Set Screw
Long Description	2 Bolt Pillow Block; 1-5/8" Bore; 2-1/8" Base to Center Height; Concentric Collar Mount; Spherical Roller



NTK BEARING PRECISION AXLE CORP.

	Bearing; Relubricatable; Cast Steel; Floating Labyrinth; Non-expansion
Category	Pillow Block
UNSPSC	31171511
Harmonized Tariff Code	8483.20.40.80
Noun	Bearing
Keyword String	Pillow Block
Manufacturer URL	http://www.rexnord.com
Manufacturer Item Number	PKB22426H
Manufacturer Internal Number	5811429
Weight / LBS	10
D	3.125 Inch 79.38 Millimeter
Nominal Bolt Center to Center	5.5 Inch 140 Millimeter
B	2.125 Inch 53.98 Millimeter
Actual Bolt Center to Center	5.5 Inch 140Millimeter
d	1.625 Inch 41.275 Millimeter
Bolt Spacing Maximum	0 Inch 0Millimeter
Bolt Spacing Minimum	0 Inch 0Millimeter