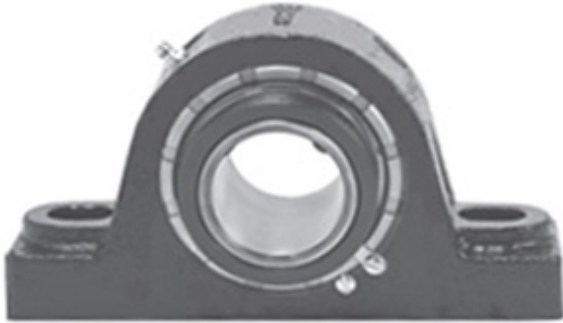




NTK BEARING PRECISION AXLE CORP.

2.188 Inch | 55.575 Millimeter x 3.313 Inch |
84.14 Millimeter x 2.5 Inch | 63.5 Millimeter LINK
BELT PB22435H18W4 Pillow Block Bearings



Bearing No. PB22435H18W4

PB22435H18W4 Bearing 2D drawings and 3D CAD models

Category	Pillow Block Bearings
Inventory	0.0
Manufacturer Name	REXNORD
Minimum Buy Quantity	N/A
Weight	6.36
EAN	0793699317091
Product Group	M06288
Number of Mounting Holes	2
Mounting Method	Concentric Collar
Housing Style	2 Bolt Pillow Block
Rolling Element	Spherical Roller Bearing
Housing Material	Cast Iron
Expansion / Non-expansion	Non-expansion
Mounting Bolts	5/8 Inch
Relubricatable	Yes
Insert Part Number	B22435HL
Seals	Floating Labyrinth
Housing Configuration	1 Piece Solid
Inch - Metric	Inch
Other Features	Double Row Single Collar Extended Inner Race With Set Screw
Long Description	2 Bolt Pillow Block; 2-3/16" Bore; 2-1/2" Base to Center Height; Concentric Collar Mount; Spherical Roller



NTK BEARING PRECISION AXLE CORP.

	Bearing; Relubricatable; Cast Iron; Floating Labyrinth; Non-expansion
Category	Pillow Block
UNSPSC	31171511
Harmonized Tariff Code	8483.20.40.80
Noun	Bearing
Keyword String	Pillow Block
Manufacturer URL	http://www.rexnord.com
Manufacturer Item Number	PB22435H18W4
Manufacturer Internal Number	5831709
Weight / LBS	14
Nominal Bolt Center to Center	6.8 Inch 171.5 Millimeter
Bolt Spacing Maximum	0 Inch 0Millimeter
d	2.188 Inch 55.575 Millimeter
D	3.313 Inch 84.14 Millimeter
Bolt Spacing Minimum	0 Inch 0Millimeter
B	2.5 Inch 63.5 Millimeter
Actual Bolt Center to Center	6.8 Inch 171.5Millimeter