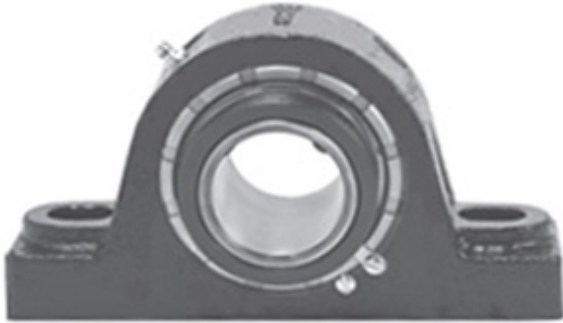




# NTK BEARING PRECISION AXLE CORP.

1.938 Inch | 49.225 Millimeter x 3.125 Inch |  
79.38 Millimeter x 2.25 Inch | 57.15 Millimeter  
LINK BELT PB22431HK4 Pillow Block Bearings



Bearing No. PB22431HK4

PB22431HK4 Bearing 2D drawings and 3D CAD models

Category	Pillow Block Bearings
Inventory	0.0
Manufacturer Name	REXNORD
Minimum Buy Quantity	N/A
Weight	5.45
EAN	0793699000337
Product Group	M06288
Number of Mounting Holes	2
Mounting Method	Concentric Collar
Housing Style	2 Bolt Pillow Block
Rolling Element	Spherical Roller Bearing
Housing Material	Cast Iron
Expansion / Non-expansion	Non-expansion
Mounting Bolts	5/8 Inch
Relubricatable	Yes
Insert Part Number	B22431HL
Seals	Floating Labyrinth
Housing Configuration	1 Piece Solid
Inch - Metric	Inch
Other Features	Double Row   Single Collar   Extended Inner Race   With Set Screw
Long Description	2 Bolt Pillow Block; 1-15/16" Bore; 2-1/4" Base to Center Height; Concentric Collar Mount;



## NTK BEARING PRECISION AXLE CORP.

	Spherical Roller Bearing; Relubricatable; Cast Iron; Floating Labyrinth; Non- expansion
Category	Pillow Block
UNSPSC	31171511
Harmonized Tariff Code	8483.20.40.80
Noun	Bearing
Keyword String	Pillow Block
Manufacturer URL	<a href="http://www.rexnord.com">http://www.rexnord.com</a>
Manufacturer Item Number	PB22431HK4
Manufacturer Internal Number	5800033
Weight / LBS	12
Actual Bolt Center to Center	6.3 Inch   159Millimeter
Bolt Spacing Minimum	0 Inch   0Millimeter
Bolt Spacing Maximum	0 Inch   0Millimeter
B	2.25 Inch   57.15 Millimeter
d	1.938 Inch   49.225 Millimeter
Nominal Bolt Center to Center	6.3 Inch   160 Millimeter
D	3.125 Inch   79.38 Millimeter