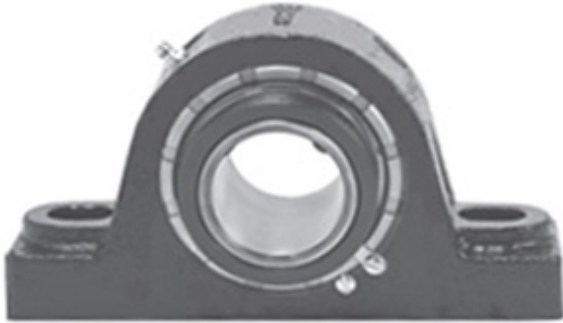




NTK BEARING PRECISION AXLE CORP.

1.688 Inch | 42.875 Millimeter x 3.125 Inch |
79.38 Millimeter x 2.125 Inch | 53.98 Millimeter
LINK BELT PB22427HTRA Pillow Block Bearings



Bearing No. PB22427HTRA

PB22427HTRA Bearing 2D drawings and 3D CAD models

Category	Pillow Block Bearings
Inventory	0.0
Manufacturer Name	REXNORD
Minimum Buy Quantity	N/A
Weight	4.54
EAN	0793699507140
Product Group	M06288
Number of Mounting Holes	2
Mounting Method	Concentric Collar
Housing Style	2 Bolt Pillow Block
Rolling Element	Spherical Roller Bearing
Housing Material	Cast Iron
Expansion / Non-expansion	Non-expansion
Mounting Bolts	1/2 Inch
Relubricatable	Yes
Insert Part Number	B22427HL
Seals	Floating Labyrinth
Housing Configuration	1 Piece Solid
Inch - Metric	Inch
Other Features	Double Row Single Collar Extended Inner Race With Set Screw
Long Description	2 Bolt Pillow Block; 1-11/16" Bore; 2-1/8" Base to Center Height; Concentric Collar Mount;



NTK BEARING PRECISION AXLE CORP.

	Spherical Roller Bearing; Relubricatable; Cast Iron; Floating Labyrinth; Non- expansion
Category	Pillow Block
UNSPSC	31171511
Harmonized Tariff Code	8483.20.40.80
Noun	Bearing
Keyword String	Pillow Block
Manufacturer URL	http://www.rexnord.com
Manufacturer Item Number	PB22427HTRA
Manufacturer Internal Number	0150714
Weight / LBS	10
Bolt Spacing Minimum	0 Inch 0Millimeter
Nominal Bolt Center to Center	5.5 Inch 140 Millimeter
D	3.125 Inch 79.38 Millimeter
B	2.125 Inch 53.98 Millimeter
d	1.688 Inch 42.875 Millimeter
Bolt Spacing Maximum	0 Inch 0Millimeter
Actual Bolt Center to Center	5.5 Inch 140Millimeter