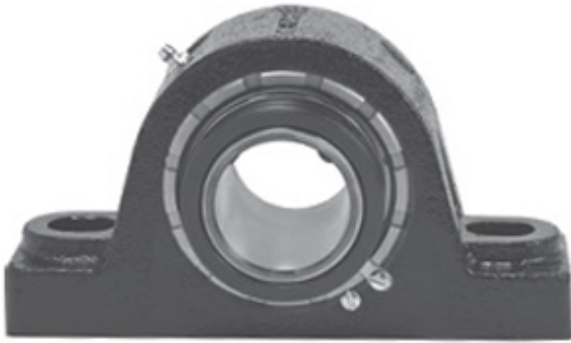




NTK BEARING PRECISION AXLE CORP.

1.75 Inch | 44.45 Millimeter x 3.125 Inch | 79.38 Millimeter x 2.125 Inch | 53.98 Millimeter LINK BELT PKEB22428E7 Pillow Block Bearings



Bearing No. PKEB22428E7

PKEB22428E7 Bearing 2D drawings and 3D CAD models

Category	Pillow Block Bearings
Inventory	0.0
Manufacturer Name	REXNORD
Minimum Buy Quantity	N/A
Weight	5.289
EAN	0793699554168
Product Group	M06288
Number of Mounting Holes	2
Mounting Method	Concentric Collar
Housing Style	2 Bolt Pillow Block
Rolling Element	Spherical Roller Bearing
Housing Material	Cast Steel
Expansion / Non-expansion	Expansion
Mounting Bolts	1/2 Inch
Relubricatable	Yes
Insert Part Number	B22428E7L
Seals	Triple Lip Contact
Housing Configuration	1 Piece Solid
Inch - Metric	Inch
Other Features	Double Row Single Collar Extended Inner Race With Set Screw
Long Description	2 Bolt Pillow Block; 1-3/4" Bore; 2-1/8" Base to Center Height; Concentric Collar Mount; Spherical Roller



NTK BEARING PRECISION AXLE CORP.

	Bearing; Relubricatable; Cast Steel; Triple Lip Contact; Expansion
Category	Pillow Block
UNSPSC	31171511
Harmonized Tariff Code	8483.20.40.80
Noun	Bearing
Keyword String	Pillow Block
Manufacturer URL	http://www.rexnord.com
Manufacturer Item Number	PKEB22428E7
Manufacturer Internal Number	0155416
Weight / LBS	10
Actual Bolt Center to Center	5.5 Inch 140Millimeter
Bolt Spacing Maximum	0 Inch 0Millimeter
Nominal Bolt Center to Center	5.5 Inch 140 Millimeter
d	1.75 Inch 44.45 Millimeter
D	3.125 Inch 79.38 Millimeter
Bolt Spacing Minimum	0 Inch 0Millimeter
B	2.125 Inch 53.98 Millimeter